

# Market Monitor – Refugee Hosting Areas

Refugee Settlement Price and Market Functionality Snapshot, 15-30 June 2020

UGANDA

## OVERVIEW AND METHODOLOGY

Uganda is one of the top refugee-hosting countries in the world, with a protracted refugee situation and ongoing influxes of refugees from neighboring countries. The country hosts 1,423,740<sup>1</sup> refugees as of 30 April 2020, with nearly 94% of refugees living in settlements primarily in the West Nile and Southwest regions of Uganda.

In view of this situation, the World Food Programme (WFP) has established a regular market price monitoring system across refugee settlements to inform cash-based response approaches. These monitoring efforts predate the COVID-19 crisis. However, due to the changing situation since the Ugandan government introduced COVID-19 containment measures in mid-March 2020, there is a risk that markets could be significantly affected and beneficiaries receiving cash assistance may not be able to access critical goods. In response, with the technical support of the Market Analysis Task Force and REACH in particular, this market price monitoring system has been expanded to capture crucial information to understand the impact of COVID-19 on commodity prices and functionality of markets in refugee communities across Uganda.

WFP collected the data through key informant interviews with traders, individuals selling key commodities, in markets across 13 refugee settlement locations from 15 - 30 June 2020. Data was collected in person and loose items purchased and weighted where possible. Nakivale and Oruchinga settlements remained inaccessible for WFP data collectors. Data for these settlements was collected remotely, using the mobile Vulnerability Analysis and Mapping (mVAM) phone-based survey system. Key informants were purposively sampled, meaning the findings are indicative only. The figures represented in this factsheet are presented at the national and regional<sup>2</sup> levels, unless stated otherwise. In total, 146 traders were interviewed nationwide in this round, of these 47 in the Southwest Region and 99 in the West Nile Region.

## KEY FINDINGS

Average cost of the full MEB in June 2020: **463'917 UGX**  
 ▼ -8% compared to the full MEB in March 2020.<sup>3</sup>

Average cost of the food MEB in June 2020: **288'570 UGX**  
 ▼ -14% compared to the food MEB in March 2020.

## MARKET FUNCTIONALITY

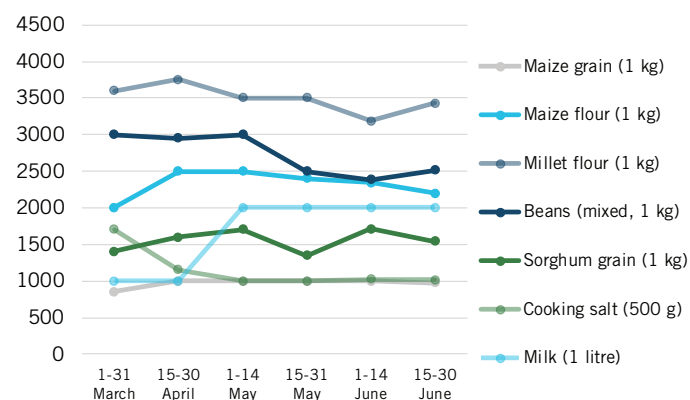
- Since last round, a recovery in **the numbers of vendors present** in marketplaces appears to have manifested in both assessed regions. Notably, in the West Nile Region (WNR), the proportion of interviewed traders, who reported an increase went up from 8% last round to 38%.
- Similarly, **the number of consumers in marketplaces** is reported to have increased, especially so in the WNR (31% reported an increase as compared to 4% during last round).
- At the same time, the proportion of interviewed traders facing **difficulties in meeting demand** has also increased, yet remains considerably lower than in May. Seventeen per cent (17%) reported difficulty in the South West Region (SWR) as compared to 8% during last round. One third reported difficulties in the WNR – 10% points more than last round.
- The proportion of interviewed traders in the WNR, who fear their **stocks running out** (35%) has doubled since last round (16%). This contrasts with a low proportion of traders in the SWR (4%).

## KEY CHALLENGES

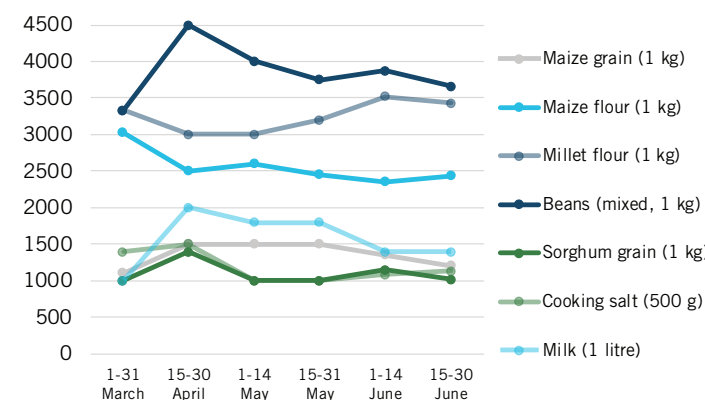
Top 3 challenges reported by traders<sup>4</sup>:

1	Transport restrictions limiting ability to source market items	17%
2	Price fluctuation of commodities	17%
3	Increased price of transportation	15%

Graph 1: Changes in food prices (in UGX) in the Southwest Region



Graph 2: Changes in food prices (in UGX) in the West Nile Region



1. United Nations High Commissioner for Refugees, [Uganda Comprehensive Refugee Response Portal](#).

2. For analysis purposes, the 13 refugee settlement locations have been aggregated to two regions: West Nile (Palorinya, Palabek, Bidi Bidi, Imvepi, Rhino Camp, Lobule, Adjumani, Kiryandongo settlements) and Southwest (Kyangwali, Rwamwanja, Kyaka, Oruchinga, Nakivale).

3. The March full MEB price constitutes the reference MEB price for refugee settlements in Uganda in 2020. For more detailed information please refer to the ["Updated Guidance for Uganda Cash Working Group"](#) (Last updated: 12.05.2020).

4. These challenges are presented at the national level.

# Market Monitor – Refugee Hosting Areas

Refugee Settlement Price and Market Functionality Snapshot, 15-30 June 2020

**UGANDA**

## Uganda Minimum Expenditure Basket (MEB)

### Food Items (monthly)

Maize flour	44 kg	Cassava (fresh)	3 kg
Beans	27 kg	Salt	1 kg
Sorghum grain	8 kg	Leafy vegetables	15 kg
Oil	4 L	Fish (smoked)	3 kg
Milk	2 L		

### Non-Food Items (monthly)

Laundry soap	2.25 kg	Clothing*	3,806 UGX
Firewood	165 kg		

### Other Components (monthly)

Water*	3,750 UGX	Livelihoods*	37,705 UGX
Education**	22,667 UGX	Transport*	11,001 UGX
Health*	2,669 UGX	Communication*	4,256 UGX
Lighting*	5,000 UGX		

### Other Items (once per year)

Reusable sanitary pads	8 pc	Saucepan	3 pc
Jerry can (20 L)	2 pc	Plate	5 pc
Jerry can (5 L)	1 pc	Serving spoon	2 pc
Bucket with lid	1 pc	Cup	5 pc
Blanket	5 pc	Mingle (stirrer)	2 pc

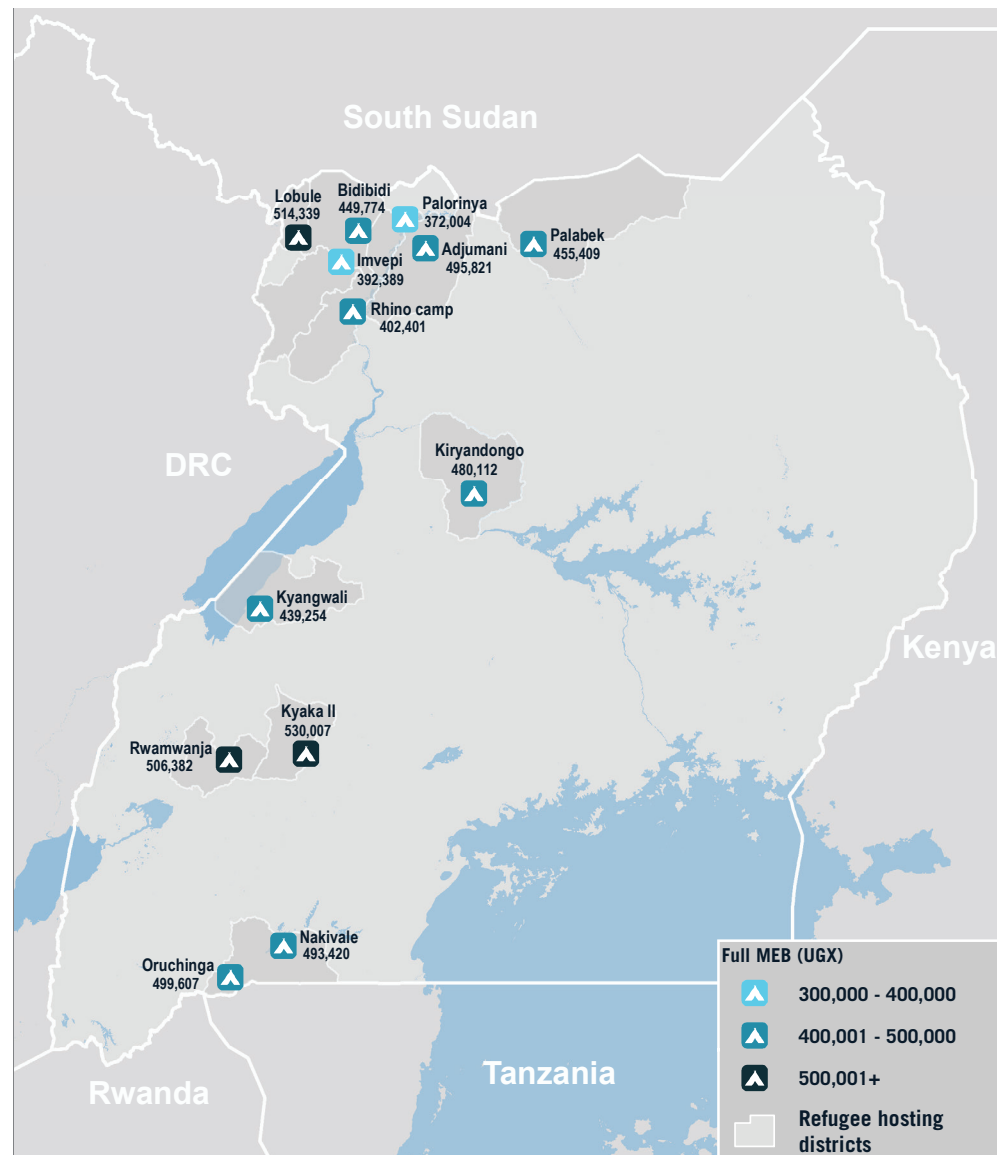
The MEB represents the minimum culturally adjusted group of items required to support a five-person refugee household in Uganda for one month. It is used as an operational tool to identify and quantify the average minimum cost of the regular or seasonal basic needs of a median household that can be covered through the local market.

Several core items were identified as being required once per year, so the total cost was divided by 12 to calculate the monthly amount. The MEB's contents were defined by the Cash Working Group in consultation with relevant sector leads. Some components were calculated based on item cost and others through a combination of analysis of household expenditures and sector-expert opinion.

\*The starred items or components were calculated based on average sectoral or component cost per month based on expenditure data.

\*\*Education costs were calculated based on average cost of school fees per year.

Map 1: Average cost of full MEB by settlement



Settlements with the least expensive average full MEB costs:

1. Palorinya
2. Imvepi
3. Rhino Camp

Settlements with the most expensive average full MEB costs:

1. Kyaka II
2. Lobule
3. Rwamwanja

## ABOUT THE MARKET ANALYSIS TASK FORCE

The recently established Market Analysis Task Force is directly reporting to the Uganda Cash Working Group. Its core objective is to foster coordination around relevant market analysis, to harmonize approaches, and to inform the feasibility of cash-based programming from the key perspective of market functionality.

## FURTHER RESOURCES:

To see the past products as part of this series, [click here](#).

# Market Monitor – Refugee Hosting Areas

### Refugee Settlement Price and Market Functionality Snapshot, 15-30 June 2020

#### COMMODITY PRICES

**Table 1:** Average<sup>5</sup> commodity prices in Uganda Shillings (UGX)<sup>6</sup>, by refugee settlement location, and percentage price change since March (upper)<sup>7</sup> and last round (1-14 June 2020, lower), respectively.<sup>8</sup>

Item (unit)	Regions						Settlements																											
	Nationwide	Southwest Region		West Nile Region		Adjumani	Bidibidi	Imvepi	Kiryandongo	Kyaka II	Kyangwali	Lobule	Nakivale	Oruchinga	Palabek	Palorinya	Rhino Camp	Rwamwanja																
MEB food items	Maize flour (1 kg)	2345	-4%	2202	+4%	2434	-10%	2519	+33%	2250	-30%	1700	+13%	2283	+15%	2438	+5%	2108	-9%	2817	-20%	1900	-2%	1775	-8%	2667	-29%	1775	+21%	2200	-12%	2300	+15%	
	Fish (smoked, 1kg)	16348	n/a	14633	+64%	17778	n/a	n/a	n/a	16667	0%	n/a	n/a	15000	n/a	n/a	n/a	13833	n/a	n/a	n/a	n/a	n/a	n/a	n/a	20000	n/a	n/a	n/a	n/a	n/a	16667	n/a	
	Beans (mixed, 1 kg)	3264	+1%	2510	-23%	3661	+15%	3961	+9%	3029	-6%	4125	+3%	3360	-15%	2438	-28%	1925	-35%	4700	+19%	2250	-29%	2612	-6%	3500	+40%	2600	+31%	3000	-16%	2500	-23%	
	Sorghum grain (1 kg)	1170	0%	1544	-10%	1020	-1%	1077	-28%	1050	+13%	1000	+5%	1533	+42%	n/a	n/a	1717	+32%	1183	-12%	1200	-22%	1333	-10%	656	-34%	1140	+22%	1500	+42%	n/a	n/a	
	Cooking oil (1 litre)	5781	+1%	5866	0%	5727	+3%	5857	-2%	5250	-1%	5000	-37%	5688	-8%	6000	+7%	6000	0%	5900	+10%	5800	+4%	5875	-2%	6000	+20%	5920	+14%	5467	-13%	5833	+4%	
	Fresh cassava (1 kg)	527	n/a	542	n/a	511	n/a	n/a	n/a	511	n/a	n/a	n/a	667	n/a	n/a	n/a	500	n/a	n/a	n/a	n/a	n/a	n/a	n/a	n/a	n/a	n/a	n/a	n/a	n/a	n/a	n/a	n/a
	Cooking salt (500 g)	1057	-55%	1014	-52%	1081	-57%	1000	+30%	1250	-48%	1233	-5%	1000	-48%	1000	-64%	1060	-41%	1000	-35%	950	-50%	1050	-44%	1094	-78%	1000	-58%	1000	-79%	1000	0%	
	Leafy greens (1 kg)	1646	n/a	1042	n/a	2250	n/a	n/a	n/a	2708	n/a	n/a	n/a	1000	n/a	n/a	n/a	1083	n/a	n/a	n/a	n/a	n/a	n/a	n/a	1333	n/a	n/a	n/a	n/a	n/a	n/a	n/a	
	Milk (1 litre)	1677	+18%	2000	+46%	1400	-4%	n/a	n/a	1333	+33%	n/a	n/a	n/a	n/a	n/a	n/a	2000	0%	n/a	n/a	n/a	n/a	n/a	n/a	1800	+50%	1100	-45%	n/a	n/a	n/a	n/a	
	Firewood (1 kg)	n/a	n/a	n/a	n/a	n/a	n/a	n/a	n/a	224	-62%	n/a	n/a	400	+20%	n/a	n/a	535	+46%	n/a	n/a	n/a	n/a	n/a	n/a	n/a	n/a	n/a	n/a	n/a	n/a	n/a	n/a	
MEB NFI items	Laundry soap (1 kg)	3433	+24%	3509	-1%	3393	+44%	3643	+4%	3312	+66%	3300	+10%	3300	-18%	3617	-7%	3767	-6%	3300	+65%	3500	0%	3300	+32%	3300	-18%	3300	+65%	4000	+100%	3667	+22%	
	Underwear (1 piece)	3000	n/a	2500	n/a	3222	n/a	n/a	n/a	1000	n/a	n/a	n/a	2000	n/a	3000	n/a	n/a	n/a	n/a	n/a	3000	n/a	n/a	n/a	5000	n/a	n/a	n/a	n/a	n/a	n/a	n/a	
	Big jerry can (20L, 1 piece)	6400	-2%	6357	+4%	6455	-7%	5250	-13%	6500	+30%	n/a	n/a	6375	+6%	6100	+2%	6667	+11%	6750	-16%	6000	0%	n/a	n/a	7000	-13%	n/a	n/a	n/a	n/a	7000	+17%	
non-MEB items	Dry cells (1 packet)	1971	+13%	2138	+21%	1888	+4%	n/a	+25%	1875	n/a	n/a	2000	+33%	2075	+4%	n/a	n/a	n/a	n/a	n/a	n/a	2300	+53%	2000	+33%	1750	+17%	1200	-40%	2500	+25%		
	Disposable torch (1 packet)	1000	-4%	1000	-8%	1000	0%	n/a	n/a	1000	0%	n/a	1000	-33%	1000	0%	n/a	n/a	n/a	n/a	1000	0%	n/a	n/a	1000	0%	n/a	n/a	n/a	n/a	1000	0%		
	Millet flour (1 kg)	3429	+3%	3431	+8%	3427	-3%	3800	-3%	3500	-16%	3143	-10%	3750	-5%	3125	+4%	3450	-6%	3583	+1%	3000	-17%	3833	-4%	3000	-14%	3875	-11%	3000	-40%	3200	+42%	
	Maize grain (1 kg)	1133	+10%	975	+12%	1211	+6%	1350	-10%	875	-13%	1000	0%	1217	+8%	814	-14%	967	+49%	1450	+18%	1000	+22%	1100	+38%	1211	+21%	1080	-15%	1500	+8%	860	-7%	
Charcoal (1 kg)	1125	n/a	1743	n/a	383	-74%	n/a	n/a	323	-68%	n/a	n/a	1000	n/a	909	n/a	2571	+145%	n/a	n/a	n/a	n/a	n/a	n/a	625	-6%	n/a	n/a	n/a	n/a	833	-17%		

A full data set with commodity prices including items not shown in this price table, such as education and shelter items, can be provided upon request.

5. In April and May 2020, this market monitor snapshot reported median commodity prices, rather than average prices. Because surveys were conducted remotely, without weighting items, there was a higher possibility of outlier prices, which would have a greater impact on averages. To align with WFP's global methodology and past reporting of MEB item prices in the Uganda response, since June 2020, the methodology was changed to report average commodity prices.

6. One United States Dollar (USD) was equivalent to 3,703 UGX as of 22 June 2020, according to [Qanda currency converter](#).

7. Pre-COVID-19 price data for Adjumani settlement corresponds to prices collected in December 2019. For all other settlements, March 2020 data is used. Price data for items listed under "other MEB items" and underwear are only collected once every 6 months and can therefore only be compared against prices from January 2020 (upper).

8. Regional and national price aggregations are only reported, if enough price data exists across various settlements. Price changes are only reported where price data for a given item exists for both this reporting round and the reference periods, i.e. March 2020 and the last reporting round.

# Market Monitor – Refugee Hosting Areas

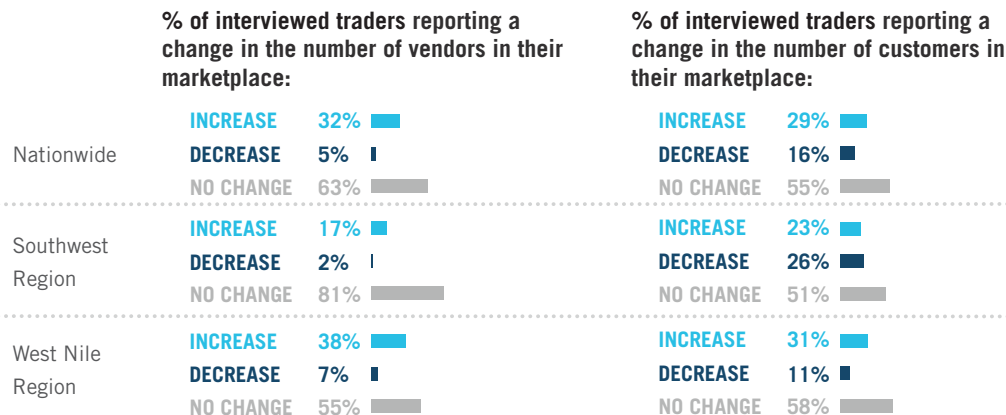
Refugee Settlement Price and Market Functionality Snapshot, 15-30 June 2020

**UGANDA**

## MARKET FUNCTIONALITY

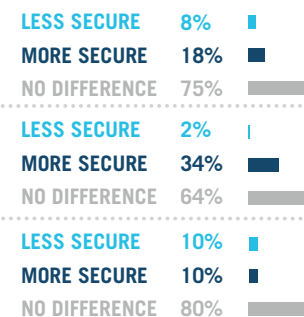
The following results refer to a recall period of one week prior to data collection.

### TRADER AND CUSTOMER BEHAVIOR



### SAFETY AND REGULATIONS

% of interviewed traders reporting changes in perceptions of security relating to operating in their marketplace:

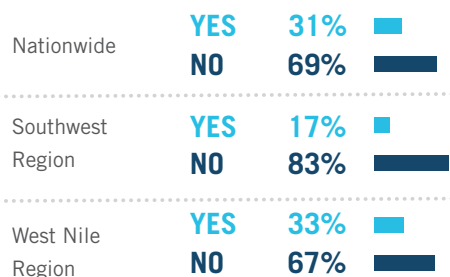


Top reported reasons by traders for feeling more or less secure:<sup>9</sup>

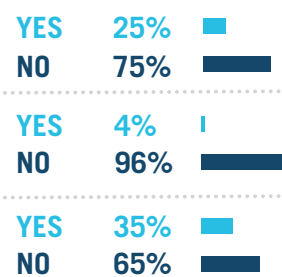


### STOCK AND SUPPLY

% of interviewed traders reporting difficulty in obtaining enough supply to meet demand:

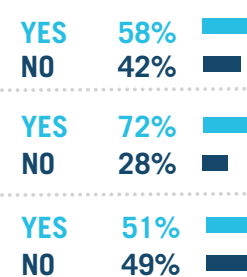


% of interviewed traders reporting concern that their stocks will run out within one week following data collection:

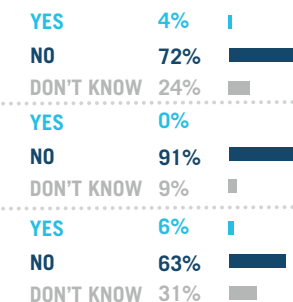


### PAYMENT AND LIQUIDITY

% of interviewed traders accepting mobile money payments when data was collected:



% of interviewed traders reporting mobile money or bank agents closing:



PREPARED BY: World Food Programme

ON BEHALF OF: Uganda Cash Working Group, Market Analysis Task Force

Informing more effective humanitarian action

The UN Refugee Agency NORWEGIAN CAPACITY

9. This indicator refers to the subset of traders who reported feeling more or less secure respectively.  
10. Respondents could select multiple response options.