

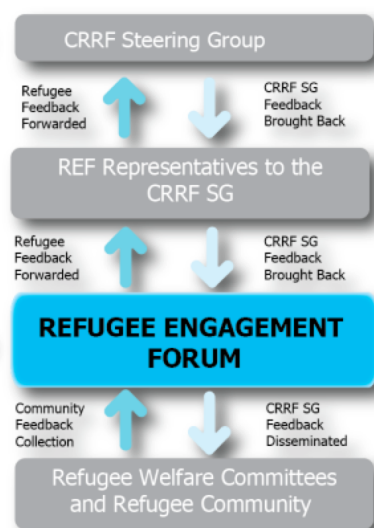
The Refugee Engagement Forum

The REF was developed to ensure that refugees' perspectives are heard at the highest levels of decision-making, and incorporated into decisions with tangible and lasting impacts.

The Feedback Cycle

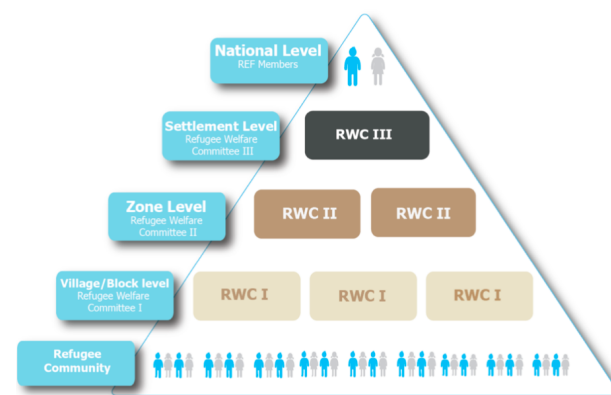
Refugee Welfare Committees elect **37** REF members, who collect feedback from communities and feed it to response partners at the quarterly CRRF SG sessions.

Two-Way Feedback Mechanism



Hand-in-hand with RWCs

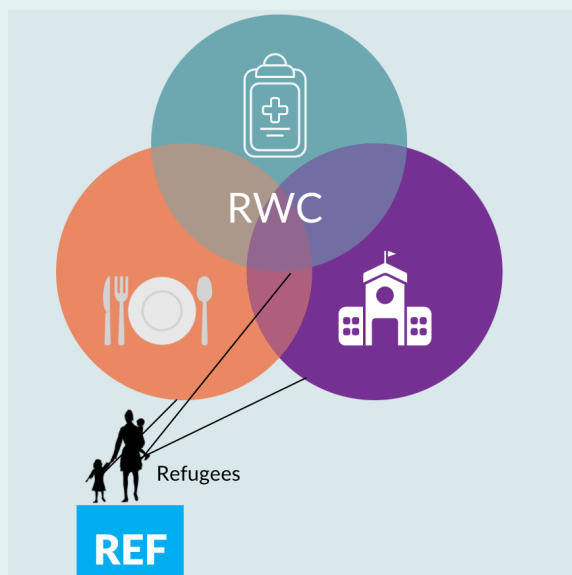
RWCs work from villages to settlements, where REF members are, to carry concerns and ideas upwards for solutions.



The REF Process

The REF links up refugees with service providers when there is a need, or helps to facilitate talks to resolve issues with implementation for food rations, education, and healthcare.

The REF works to resolve issues with implementation and improve the daily lives of refugees.



1 Identify peoples' concerns & conduct consultations

REF members collect information from diverse groups in their settlements and debrief with the rest of the REF members.

2 Discuss the issues at quarterly REF Meeting

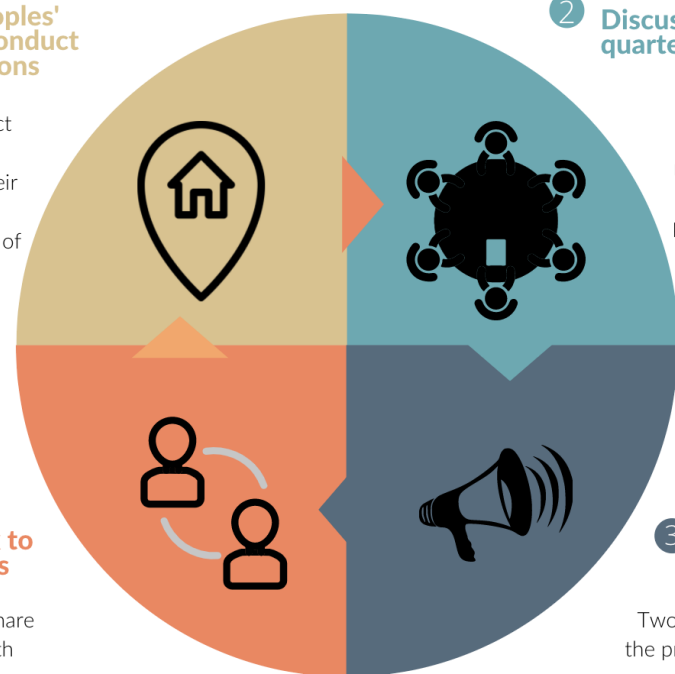
The 37 REF members discuss the concerns raised & formulate key messages to be presented at the CRRF SG meeting.

4 Report back to communities

REF members share outcomes with communities.

3 Present to the CRRF SG

Two REF members present the priorities and gaps in their community to the CRRF SG for consideration and receive feedback/responses for their communities.



The REF Cycle

What the REF does for Refugees

- **Talk to communities** about what they think, need and feel.
- **Work with decision-makers** to discuss solutions.
- **Advocate for rights** of refugees.
- **Link with service providers** to resolve issues with food, health, education.



How to Get Involved

- Keep up to date with what the RWC is doing.
- Attend & Participate in RWC discussions.
- Share your ideas with RWC members.
- Learn about refugee response systems in Uganda.



Refugees talk to REF when they see gaps in response.

